



# SI-800

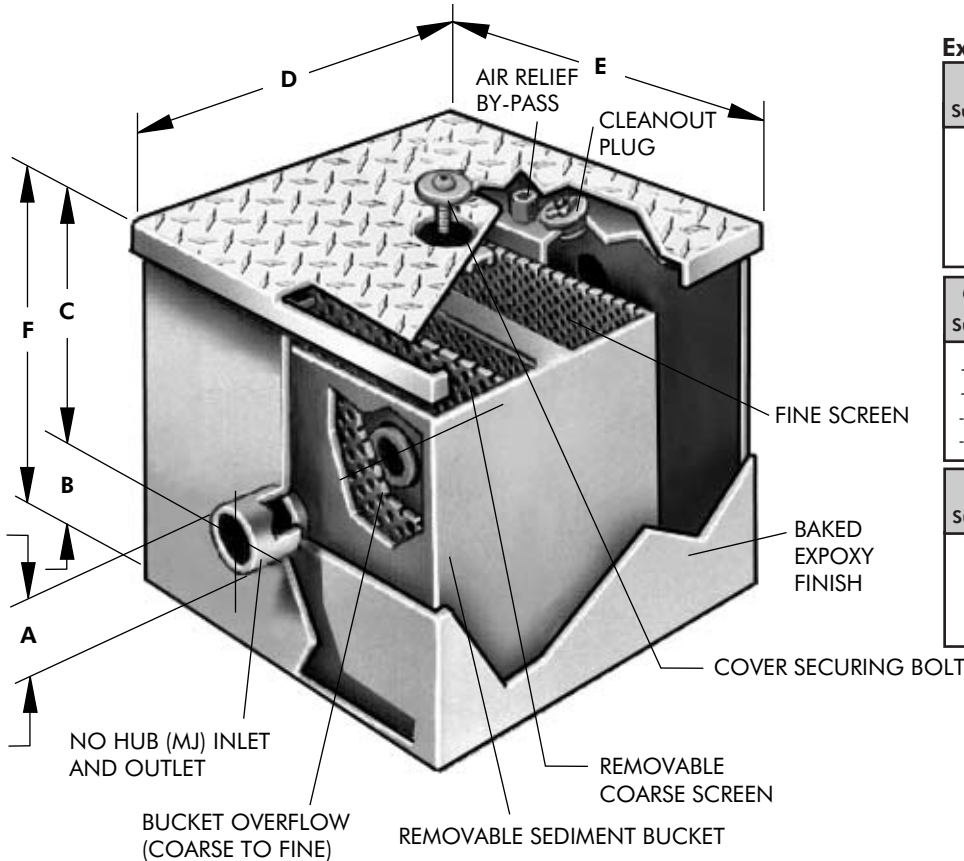
Tag: \_\_\_\_\_

## Large Capacity Hair, Plaster and Sediment Interceptor

**SPECIFICATION:** Watts Drainage Product SI-800 epoxy coated inside and outside fabricated steel sediment interceptor with flow rating of 20 to 75 GPM. Unit shall include one piece removable bucket, code approved deep seal trap, cover securing bolt(s), and recessed "non-skid" removable rectangular cover.

**FUNCTION:** Prevents hair, plaster and sediment from entering and clogging drain lines.

Order Code: **SI-8**  -  -



**Ex. SI-820-SS**

Flow Rate (Select One)		
Suffix	Description	
20	20 GPM	<input type="checkbox"/>
25	25 GPM	<input type="checkbox"/>
35	35 GPM	<input type="checkbox"/>
50	50 GPM	<input type="checkbox"/>
75	75 GPM	<input type="checkbox"/>

Options (Select One or More)		
Suffix	Description	
-HDC	Heavy Duty Cover	<input type="checkbox"/>
-O	Inlet & Outlet Other Than Std	<input type="checkbox"/>
-SS	All Stainless Steel	<input type="checkbox"/>
-X	Extension as required	<input type="checkbox"/>

Optional Inlet/Outlet Sizes (When -O is selected above)		
Suffix	Description	
-2	2"(51) Inlet/Outlet	<input type="checkbox"/>
-3	3"(76) Inlet/Outlet	<input type="checkbox"/>
-4	4"(102) Inlet/Outlet	<input type="checkbox"/>
-6	6"(152) Inlet/Outlet	<input type="checkbox"/>

Cupic Capacity of Fixtures (Inches)	Flow Rate (GPM)	A	B	C	D	E	F
		Inlet & Outlet	Base to Center	Top to Center	Length	Width	Height
4601-6150	20	3"(76)	14-1/2"(368)	6"(152)	20-7/8"(530)	19-7/8"(505)	20-1/2"(521)
6151-7700	25	3"(76)	16-1/2"(419)	6"(152)	20-7/8"(530)	19-7/8"(505)	20-1/2"(521)
7701-10750	35	4"(102)	14-1/2"(368)	6"(152)	32-7/8"(835)	24-7/8"(632)	20-1/2"(521)
10751-15400	50	4"(102)	18-1/2"(470)	6"(152)	32-7/8"(835)	24-7/8"(632)	24-1/2"(622)
15401-23000	75	4"(102)	26-1/2"(673)	6"(152)	40-7/8"(1038)	24-7/8"(632)	32-1/2"(826)

Job Name \_\_\_\_\_ Contractor \_\_\_\_\_

Job Location \_\_\_\_\_ Contractor's P.O. No. \_\_\_\_\_

Engineer \_\_\_\_\_ Representative \_\_\_\_\_

WATTS Drainage reserves the right to modify or change product design or construction without prior notice and without incurring any obligation to make similar changes and modifications to products previously or subsequently sold. See your WATTS Drainage representative for any clarification. Dimensions are subject to manufacturing tolerances.



CANADA: 5435 North Service Road, Burlington, ON, L7L 5H7 TEL: 905-332-6718 TOLL-FREE: 1-888-208-8927 Website: www.wattsdrainage.ca

