

SmartSense™

Excess Flow & Thermal Shutoff Valve
For extra safety in gas appliance connections



- Helps protect against excessive gas leaks, fires, and explosions
- Simple installation
- Compatible with most residential gas appliances
- Assembled in the USA

KEEP YOUR FAMILY AND HOME SAFE



Choose appliance connector kits with SmartSense technology for extra protection

Patent Pending

Dormont.com

Dormont®
A **WATTS** Brand



Natural gas has become essential to our everyday lives, be it for cooking meals or heating our homes. Dormont **SmartSense™** technology helps safeguard your home against gas appliance connection hazards. With its unique and innovative design, SmartSense provides your family with the safety and protection they deserve.

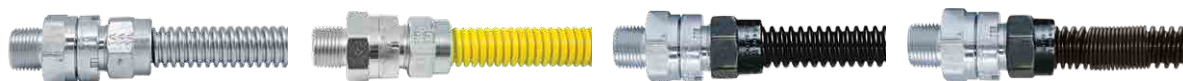
Detection and reaction to a gas appliance connector rupture, disconnect or fire is critical in protecting your home and family. Our SmartSense could be a life-saving investment, so the next time you connect, Connect with Confidence, Connect with Dormont.



Appliance connector kits with SmartSense EFV-TS (Excess Flow & Thermal Shutoff Valve) technology are available for these applications and more.

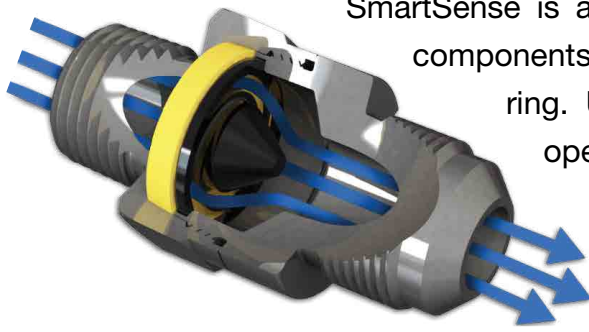


*Applies to all yellow and black powder coating



	SuprSafe® Stainless Steel	SafetyShield® Enhanced Yellow Coating	LV® Enhanced Black Coating	Whisperflex®
Dryer	✓	✓		
Cooktop	✓	✓		
Water heater	✓	✓		
Furnace	✓	✓		
Spaceheater	✓	✓		
Outdoor grill	✓		✓	✓
Outdoor firepit	✓		✓	✓
Fireplace	✓		✓	✓

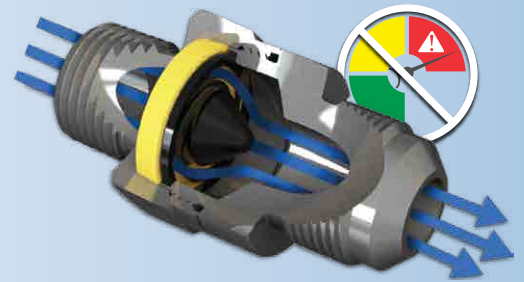
SmartSense™ provides two levels of protection



SmartSense is an intricately-designed valve comprised of two primary components – a gas flow-limiting plunger and thermal shutoff sensing ring. Under normal operating conditions, both parts remain open to allow gas flow at standard flow rates. However, in the event of a rupture, disconnect of an appliance gas connector, or even a fire, SmartSense automatically activates to help ensure your safety.

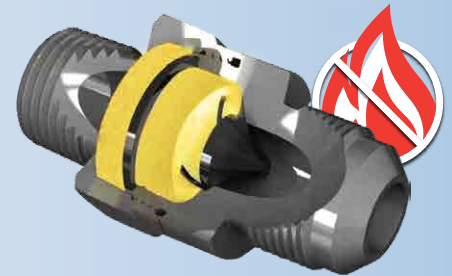
1. Excess Flow Limiting

The plunger limits gas flow in the event of a gas appliance connector rupture or disconnect, helping to protect against a harmful build up of gas within the home. Once the gas line is restored and the pressure equalizes, SmartSense will automatically reset to provide the standard rate of flow.



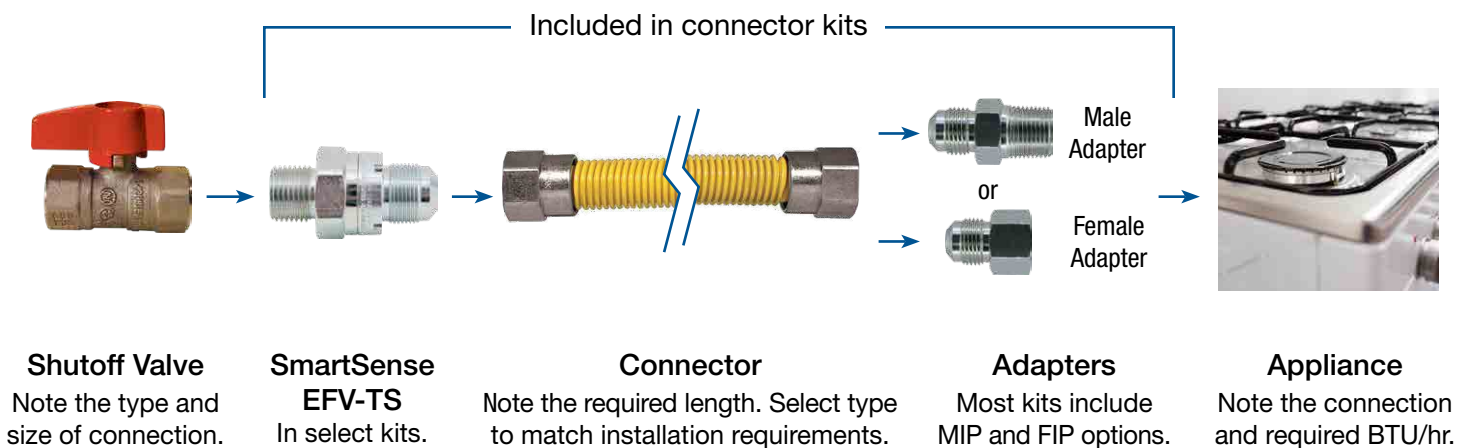
2. Fire Safe Shutoff

The thermal ring expands to stop gas flow when exposed to extreme temperatures and the valve reaches 350°F to 425°F.



Connector Kit Selection

Select gas appliance connector kits by intended use, capacity, connection length, fitting size, and type.



Benefits

- Thermal sensing shutoff mechanism
- Prevents excessive gas leaks
- Simple installation
- Compatible with most residential gas appliances
- Assembled in the USA

Features

- High temperature thermal reaction ring
- High temperature, gas-compatible, flow-limiting plunger
- CSA Certified
- California DSA Certified (CA-DSA 16-F01)
- Commonwealth of Massachusetts Approved
- The yellow and black coated gas connectors feature a premium antimicrobial coating to inhibit bacteria growth, improve corrosion and UV protection, and enhance flame and smoke resistance
- Premium antimicrobial coating for increased safety, durability, and longevity
- Limited lifetime warranty – for details visit www.watts.com/resources/warranty-information

Dormont Gas Connector Kits and accessories are available from your local building supply store and wholesale distributors



SmartSense EFV-TS Specifications

1. Rated Trip Flow and Max Flow Capacity values are kBTU/hr @ max. "w.c. PD (natural gas, 0.64 s.g., 1000 BTU/cu.ft.).
2. A minimum of 5" w.c. inlet pressure is required with a maximum inlet pressure of 14" w.c. (1/2 psig).
3. For more information on flow rates with a specific Dormont gas connector, contact 1-800-DORMONT.
4. Operating temperature: -20°F to 150°F (-29°C to 66°C).
5. Bypass rate: MAX 2.5 SCFH at 0.5 psi.
6. Installation orientation: Multi-poise (horizontal, vertical up, vertical down).
7. EFV Type: EFVB (Bypass with automatic reset).
8. Maximum trip flow is 1.4 times the rated trip flow.
9. Model -TS (Thermal Shutoff) Reaction Temperature Range: 350°F to 425°F (176.7°C to 218.3°C).

	MODEL 90-1031-V2-TS		MODEL 90-2031-V4-TS		MODEL 90-3041-V5-TS		MODEL 90-303M-V6-TS	
	<i>Rated Trip</i>	<i>Max. Capacity</i>	<i>Rated Trip</i>	<i>Max. Capacity</i>	<i>Rated Trip</i>	<i>Max. Capacity</i>	<i>Rated Trip</i>	<i>Max. Capacity</i>
Horizontal	95 @ 1.55	60 @ 0.40	115 @ 0.70	93 @ 0.35	160 @ 0.80	125 @ 0.25	160 @ 0.80	125 @ 0.25
Vertical Up	115 @ 2.25	80 @ 0.60	145 @ 1.05	118 @ 0.45	185 @ 1.00	150 @ 0.40	185 @ 1.00	150 @ 0.40
Vertical Down	60 @ 0.70	45 @ 0.25	85 @ 0.45	60 @ 0.15	135 @ 0.60	105 @ 0.20	135 @ 0.60	105 @ 0.20
Inlet	1/2" MNPT x 3/8" FNPT		1/2" MNPT		3/4" MNPT x 1/2" FNPT		1/2" MNPT	
Outlet	3/8" OD Flare		1/2" OD Flare		5/8" OD Flare (15/16"-16 Threads)		5/8" OD Flare (15/16"-16 Threads)	



USA: Tel: (800) 367-6668 • Fax: (724) 733-4808 • Dormont.com
 Canada: Tel: (888) 208-8927 • Fax: (905) 481-2316 • Dormont.ca
 Latin America: Tel: (52) 55-4122-0138 • Dormont.com