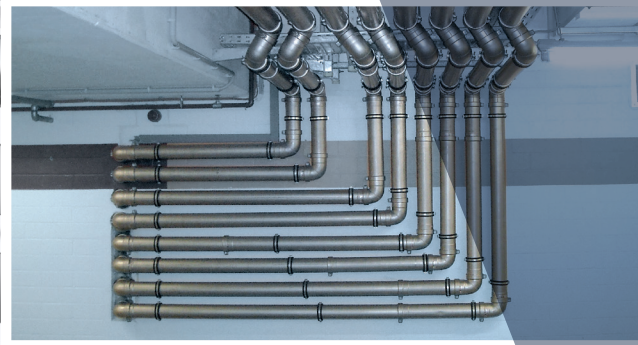
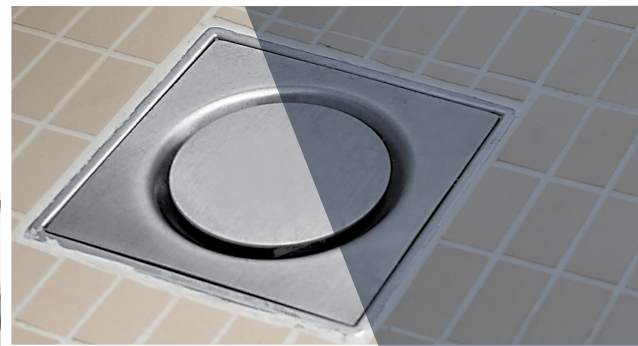


Stainless steel piping, drains and channels

System solutions for a wide range of applications



Applications for BLÜCHER Systems



Commercial

Hospitals, schools, restaurants and fitness centers are some of the places where you will find a vast number of drainage solutions from BLÜCHER. The smooth stainless steel surface and high capacity prevent settlements and standing water in public areas. The modular systems provide an easy and quick installation.

Industrial

BLÜCHER specializes in drainage solutions for large industrial facilities. Among the industries in which we play a major part, are the food industry that benefits from our hygienic solutions, and the pharmaceutical industry, which in particular values the sustainability of the BLÜCHER® products.

Housing

BLÜCHER manufactures exceptional residential shower and other drain products for high visibility applications. Stainless steel ensures a classic and aesthetic look.

Marine

The marine industry has a special place in BLÜCHER's commitment to drainage. Cruise vessels, ferries, yachts, merchant and navy vessels as well as off-shore installations all depend on the performance of our solutions at sea where good hygiene and light-weight systems are essential.



Stainless Steel Pipes, Drains and Channels

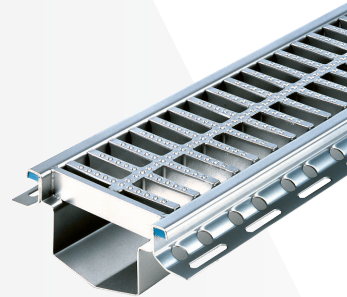
BLÜCHER® Drain

BLÜCHER® Drain spans a wide range of applications in all types of construction. BLÜCHER® Drain Commercial/Industrial covers light to heavy duty requirements in light commercial through heavy industrial, and sanitary facilities. BLÜCHER® Shower is a classic product line for unique commercial and residential shower installations, and BLÜCHER® Marine provides drainage solutions for the maritime industry.



BLÜCHER® Channel

BLÜCHER® Channel is comprised of Stainless steel trench drain and kitchen channel products. Trench and channel drains are widely used in commercial and industrial sanitary applications and feature smooth surfaces with no sharp edges, to maintain a high hygienic standard.



BLÜCHER® Pipe

BLÜCHER has the most extensive range of pipes and fittings in stainless steel. BLÜCHER® Pipe is produced in diameters ranging from 2" (50mm) to 10" (250mm), and we offer a complete line of bends, fittings and brackets. The pipes can be used above as well as below ground where the low weight and the push-fit system make installation fast and easy.

With their large flow capacity and a minimal need for brackets, stainless steel pipes save real time in the installation process.

The pipes can also be used for black- and grey water sanitary discharge systems onboard ships.



BLÜCHER Channels and Drains:



Compliance with NSF/ANSI/3-A 14159-1-
Hygiene Requirements for the Design of
Meat and Poultry Processing Equipment.



Meeting the Highest Standards

Since BLÜCHER was launched in 1965, we have continually updated our product development, testing, and production facilities to provide our customers with the best possible stainless steel drainage products.

- All our products are tested and certified to the highest industry standards. We have earned Scandinavian and European product approvals for performance in areas such as flow capacity, self-cleansing, and fire resistance.
- In addition, we play an active role in setting international standards.
- Testing performed by recognized independent institutes includes noise and shock and vibration testing.
- We perform ISO 9001 certified production.
- In addition, we carry out 100% leakage testing of all products.

Benefits of Stainless Steel

Stainless steel is a highly corrosion-resistant material with outstanding longevity. Many other characteristics make it a reliable choice, including:

- Lightweight
- Strong, durable, pressure and chemical-resistant
- Able to withstand a high degree of vibration
- Functions within a wide temperature range
- Enables the design of thin-walled low-weight products
- Ease of handling and installation
- High flow rates
- Hygienic
- Easy to maintain
- Environmentally (can withstand temperatures over 1,472°F, or 800°C)

BFD Adjustable Floor Drains

Specifications

- Stainless steel AISI 304 or 316L
- IAPMO and/or NSF listed
- ANSI load classifications to Extra Heavy Duty

Sanitary stainless steel drains and cleanouts

Drains for hospitality, medical, commercial, and industrial applications

Sanitary applications

- Industrial manufacturing
- Medical facilities
- Hotels and resorts
- Commercial kitchens
- Supermarkets



FOOD AND BEVERAGE

BLÜCHER provides drainage solutions for food processing and beverage production facilities.

- Smooth, easy-to-clean surfaces for hygienic drainage
- Self-cleaning
- Excellent flow capacity

The BLÜCHER HygienicPro® line includes drains and channels specifically tailored for the food processing and beverage production industries.



BIOTECH AND PHARMACEUTICAL

BLÜCHER provides safe drainage solutions for removing water from production areas, laboratories, utility rooms, kitchens and changing rooms in the biotechnology and pharmaceutical industries.

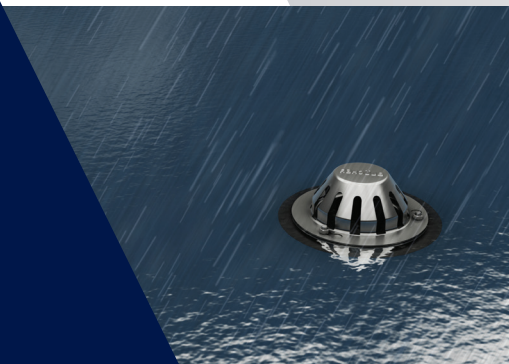
- Excellent hygienic properties
- High flow capacities
- Minimal maintenance



COMMERCIAL

BLÜCHER drainage systems are installed in hospitals, hotels, shopping malls, airports and similar construction where hygiene is especially important.

- Easy-to-clean and maintain components – including piping, drains, and channels – promote hygienic conditions.
- Stainless steel is especially durable, withstanding the drainage requirements of commercial settings that serve a large number of people.



MARINE

For more than 30 years, BLÜCHER has been the sanitary discharge system of choice for new and retrofitted vessels.

- More than 3,275,000 yards of piping has been installed in more than 900 vessels.
- BLÜCHER drainage solutions can be found in cruise ships, ferries, luxury yachts, naval vessels, cargo vessels, off-shore platforms and offshore vessels.



Yesterday

BLÜCHER was founded by the Danish plumber Johannes Blücher Skibild. A man with a vision and both his feet solidly on the ground, looking for a sophisticated grating for drainage installations. Outside business hours he and his wife started operating out of their barn producing stainless steel gratings. Since then, the BLÜCHER group has continuously expanded its products and services.

Today

As BLÜCHER challenges yesterday with new designs and solutions, we stay true to the basics of good craftsmanship, quality and a down-to-earth-spirit. Therefore, it is always easy to do business with us regardless of how complicated a project might be.

Customized projects are supported with extensive documentation and CAD drawings. All products are of course delivered with a detailed step-by-step guide to installation, and to the extent that our products need maintenance, guides can be found on our website.

Tomorrow

We intend to keep up the flow and continuously improve and grow our product offering, documentation and communication.

We also intend to expand our worldwide services and representation, always adapting to local requirements and your specific needs.



References

At BLÜCHER reputation and longstanding relationships mean everything. We hope that we have given you good reason to give us a try and consider us your drainage partner.

Some of the customers that have done so are:

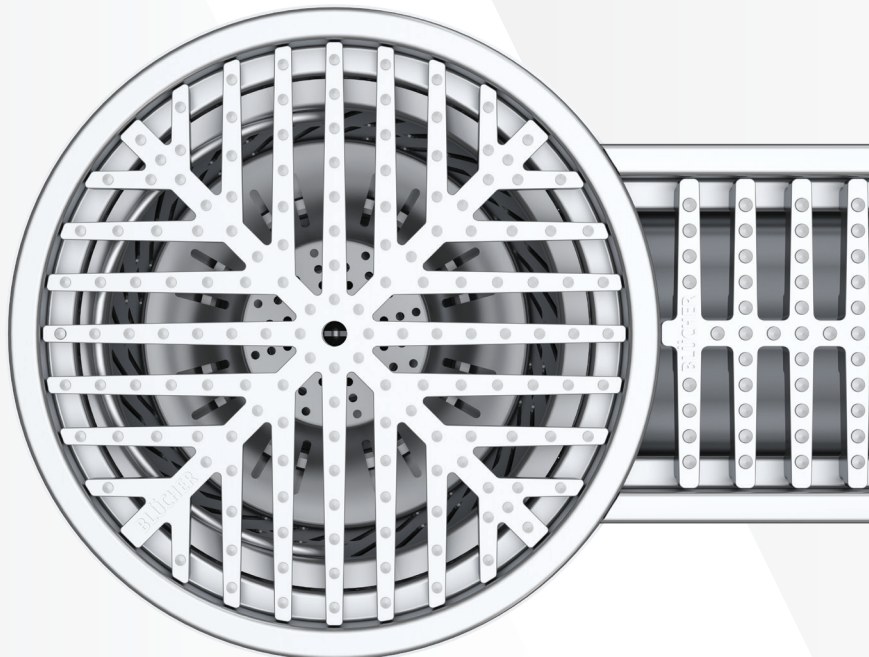
Arla Foods – Aker Finnyards – Bahrain National Museum

Coca Cola – Royal Caribbean Cruise Lines – Heathrow Airport Heineken –
Hong Kong Disneyland – Ikea – Kodak

McDonalds – Mercedes – Benz – Nestlé – Novo Nordisk

The Oslo Opera – Pfizer – Queen Elizabeth Hospital – St. Paul's Cathedral –
Sydney Opera House.

You are very welcome to ask for detailed references relevant to you. And you are of course most welcome to ask for personal assistance and any other supporting material from our sales and marketing team.



Combining know-how, dedicated service, and common sense, BLÜCHER® designs and manufactures high quality stainless steel solutions for commercial, industrial, and marine markets worldwide.

BLÜCHER products are manufactured in accordance with ASME A112.3.1 and the Uniform Plumbing Code (UPC). N. American certifications and listings can be found through the International Association of Plumbing and Mechanical Officials (IAPMO), and NSF International.

Learn more at BLUCHERpipe.com



A **WATTS** Brand

USA: T: (828) 248-3995 • F: (828) 248-3929 • BLUCHERpipe.com
Canada: T: (905) 332-4090 • F: (905) 332-7068 • BLUCHERpipe.com
Latin America: T: +52 1 (55) 4122-0138 • BLUCHERpipe.com